

## SPONSOR LIST

### Corporate Partners

Christie Clinic Illinois Marathon  
Sullivan-Parkhill Automotive, Inc.

#### Level I (\$1,500-\$3,000)

Amdocs Employees  
Herff Jones (Cap and Gown Division)  
Patterson Company  
Sam's Club  
Tons O' Fun Band  
WCIA  
WDWS/WHMS

#### Level II (\$1,000-\$1,499)

American Dowell Sign Company  
C-U Autism Network  
Carle  
Down Syndrome Network  
First State Bank  
Horizon Hobby, Inc.  
MetriTech, Inc.  
Tri Star Marketing, Inc.

#### Level III (\$500-\$999)

CTF  
Commerce Bank  
Cozad Asset Management, Inc.  
Direct Impressions  
Flooring Surfaces, Inc.  
Hearthside Food Solutions, LLC  
Kemper CPA Group, LLP  
McGladrey  
Orange and Blue Dist. Company  
Ruedi Holder & Associates, Inc.  
Sweet Pea Photography  
Wells Fargo Insurance Services

#### Level IV (\$250-\$499)

Advance Auto Parts  
Bank of Rantoul  
BankChampaign  
Christie Foundation  
Chuck Abeln Photography  
Farm Credit Services of Illinois  
Greater Champaign County AMBUCS  
Hickory Point Bank & Trust  
Hudson Drug & Hallmark Shop  
Kingdom Lawn Care  
Martin Graphics  
Martin, Hood, Friese & Associates  
Northwestern Mutual Financial Network  
Panera Bread  
Pepsi-Cola C-U  
Peter B's Automotive  
Alan & Lynn Ryle  
Strawberry Fields

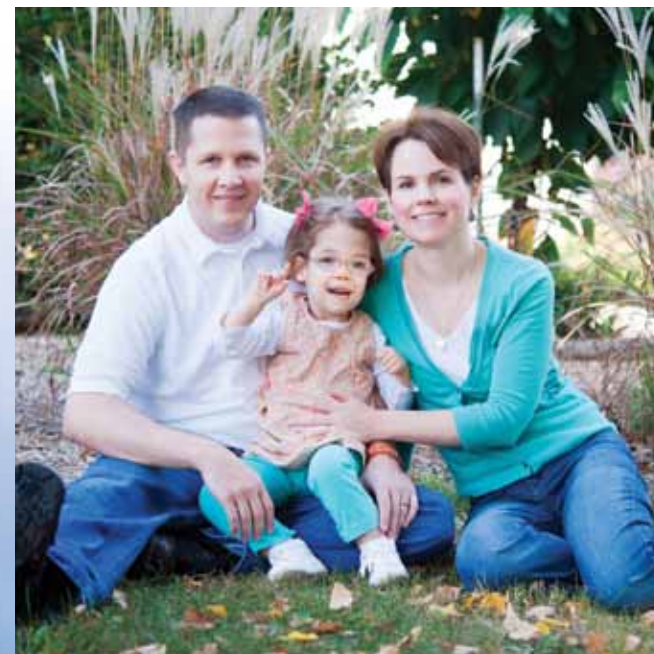
## 2013 Tree of Hope Campaign

[www.dsc-illinois.org](http://www.dsc-illinois.org)

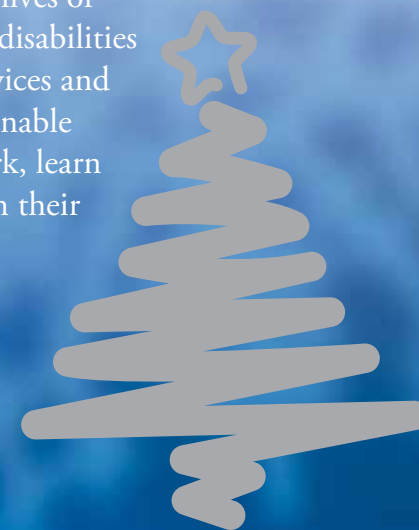
Developmental Services Center  
1304 West Bradley Avenue  
Champaign, IL 61821-2035  
217-356-9176



# Tree of Hope Campaign



“To enhance the lives of individuals with disabilities by providing services and supports which enable them to live, work, learn and participate in their communities.”



A United Way  
affiliated organization



*The Tribut Family*



*Riley*



My husband and I were so excited about being pregnant with our first child. My pregnancy was going well and all my prenatal visits indicated our child was healthy. When I went into labor like most first moms, I was anxious and excited. After 32 hours of labor, developing an infection, and

going through an emergency C-section our beautiful daughter, Riley, was born. The labor and delivery had been difficult but the doctors assured us she appeared healthy at birth. My husband and I were full of love and joy holding her and looking into Riley's eyes. We had no idea that in a few hours our world would come crashing down.

Ten hours after Riley was born we were awakened by a neonatologist walking into our room saying, "I'm going to be the one to save your daughter." We were startled and had no idea what he was talking about. He told us that they believed Riley had experienced a seizure in the nursery and that she had to be transferred to the neonatal intensive care unit (NICU). He also informed us that she appeared to be experiencing some difficulty breathing and feeding so a feeding tube had been placed and she was put on a bi-level positive airway pressure (BIPAP) machine to help support her breathing. In that moment our world just stopped. We couldn't believe what we were hearing and we were terrified of losing our daughter. The next five weeks were the worst weeks of our entire lives.

Riley spent two and half weeks at the hospital where she was delivered, receiving round-the-clock care from neonatologist and NICU nurses. However, despite their best efforts she seemed to be getting worse and Riley was transferred to a local children's hospital. There she spent another two and half weeks seeing what seemed like every specialist they had in the building. They ran test after test after test. After they stabilized her by providing her continuous oxygen and placing her on a dysphagia diet (used to treat dysphagia, a condition in which the patient has difficulty chewing and swallowing), we were finally able to take our sweet baby home.

We spent the next six long months in and out of doctors' offices and hospitals. She was diagnosed with severe central and obstructive sleep apnea and placed back on a BIPAP machine. During this time we were told that due to Riley's breathing difficulties she was at serious risk for developing devastating complications if she got an upper respiratory infection. Her doctor told us it would be best if one of us could stay home with her to keep her out of daycare and away from constant exposure to germs. We wanted to do whatever we could to keep Riley healthy but turning a two income household into a one income household with a

sick child was no easy task to face. But we made it work. My wonderful and selfless husband quit school and his new career and started the journey of becoming Mr. Mom.

By this time we had learned about early intervention programs and Riley began receiving services; however, we quickly realized if we were going to make this situation work we needed the support of our family. So, we moved to Champaign to be closer to family and that's when we were introduced to Developmental Services Center (DSC). Riley was approximately nine months old when she started with DSC and she was not rolling over, sitting up, or meeting any developmental milestones.

We both remember meeting the therapists at DSC and being so impressed with their expertise and empathy towards Riley and our family. Riley received speech, physical, and developmental therapy from DSC. The therapists were wonderful in helping guide us in how best to help Riley move towards her milestones and to not lose sight of her progress despite how delayed she was compared to her peers. Any parent raising a child with special needs knows how much you need someone on your family's side feeding you with hope and encouragement; DSC gave us that hope. With the help of DSC we learned that Riley was making progress, it was just on her time,

not ours. We started to refer to it as "Riley time". So now when we sometimes start to get discouraged because she's struggling to meet a milestone we've learned to take a step back, take a breath, and smile and say to ourselves, she's on Riley time.

Children with special needs and their families so desperately need the help DSC can provide. DSC not only helped Riley with providing vital therapies, but they also assisted in loaning our family much needed adaptive medical equipment, which we would have never been able to afford. Much of the adaptive equipment children with special needs require is not covered by medical insurance.



Riley is a beautiful little girl who touches everyone who gets to know her with her heart-melting smile and infectious laugh. The services provided by DSC for children and adults gives us hope that Riley will continue to be supported as she gains her independence and lives a life full of joy and adventure. But this can't happen without the community's help. During a time of frequent budget threats and cuts to vital services for many of our community's most vulnerable citizens, it is critical that we band together and support DSC so that they may continue enriching the lives of so many children and adults in our community...one family at a time.

**Please help light the way for our family and many others by making your Tree of Hope donation today!**

*The Tribut Family*